

Nadeau
STOUT
CUSTOM HOMES

CBC1258647

The Buckhorn III



3250 SE 58th Ave, Suite 1
Ocala, FL 34480 On Baseline Road, (CR35)
Phone: (352) 387-1597 Fax (352) 369-7329

www.NShomes.us

© Copyright 2018 Nadeau-Stout Custom Homes, LLC



3250 SE 58th Ave, Suite 1
 Ocala, FL 34480 On Baseline Road, (CR35)
 Phone: (352) 387-1597 Fax (352) 369-7329
 CBC1258647
www.NShomes.us

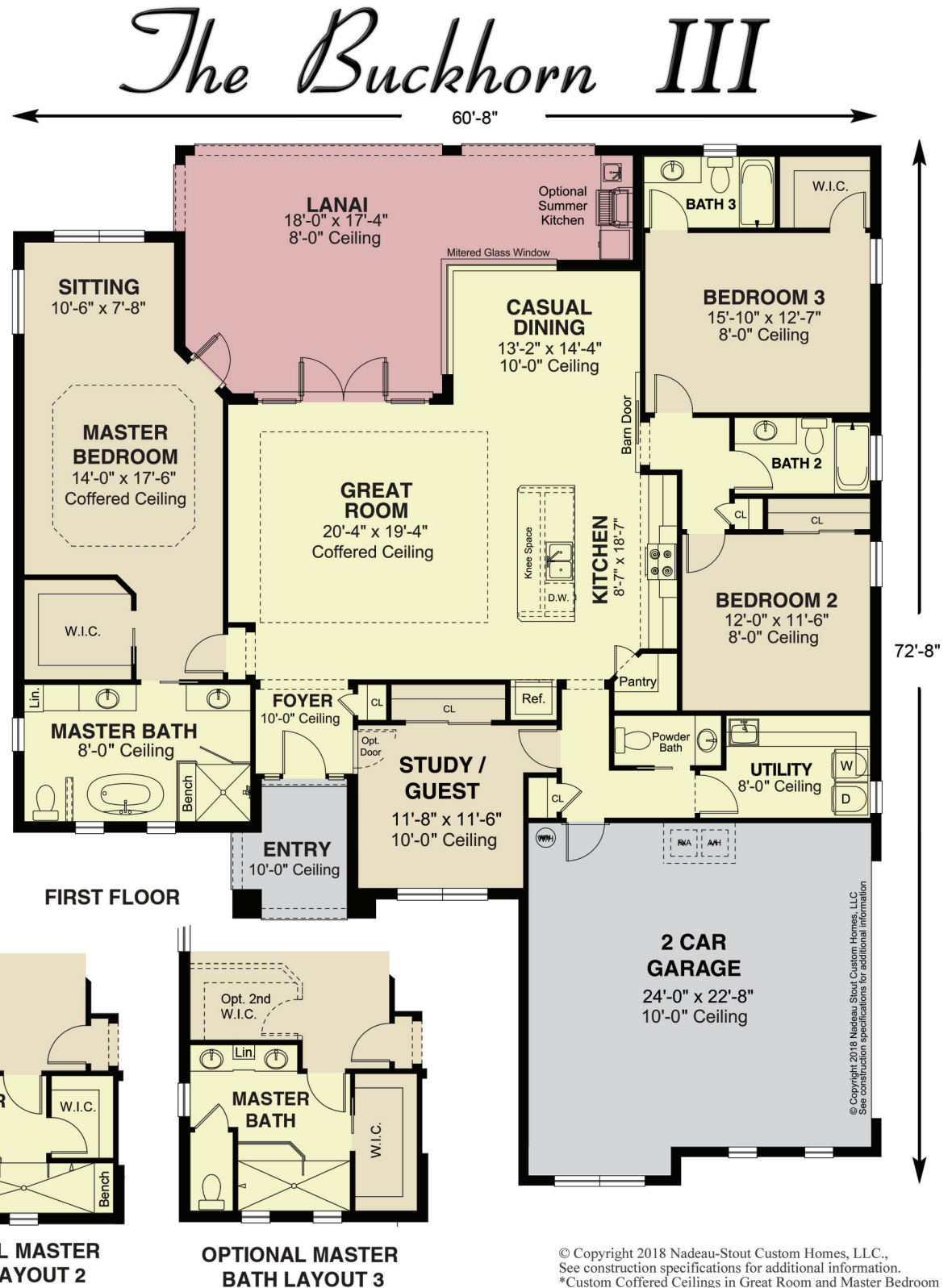
The Buckhorn III

Square Footage

Living: 2,450 Lanai: 417
 Front Entry: 71 Garage: 610
 Total: 3,548

House Description

This innovative design brings the incredible floorplan of The Buckhorn to the next level, with enhancements that add value and create a home that serves the modern family well. The Great Room and Kitchen have been expanded, allowing for smart additions such as increased storage in the kitchen island and a walk-in pantry. The Master Bedroom offers a private sitting area and your choice of three bath configurations, allowing you to create a peaceful suite just for you. Both the Master Bedroom and Great Room open to a generous lanai to enhance your outdoor entertaining. Bedroom 3 can be utilized as a second master with its en-suite bath and large walk-in closet. The study offers generous closet space enabling it to serve as a true 4th bedroom with a powder bath added close by. The larger Utility room is now in a more discrete location. Finally, the Garage and overhead door have been enlarged making it taller and wider to accommodate full size trucks and SUV's. These changes in the floorplan increase the home's size and will suit your family's comfort level.



© Copyright 2018 Nadeau-Stout Custom Homes, LLC.
 See construction specifications for additional information.
 *Custom Coffered Ceilings in Great Room and Master Bedroom